



# TREE WORK SCHEDULED

Date: \_\_\_\_\_

Dear Customer:

**DTE Energy has scheduled tree trimming and/or removals on your property** to ensure safe and reliable energy for your neighborhood. Trees are the leading cause of power outages and can pose serious safety hazards if growing too near or into power lines. The following work is scheduled:

- ☐ **Tree Trimming** - No action is required on your part. Details on how trees will be trimmed are on the back.
- ☐ **Tree Removal** - Trees recommended for removal are marked with two white dots at the base of the tree. We want to discuss this work with you before we begin. **Please read and fill out the “Tree Removal Agreement”**
- ☐ **Other:** \_\_\_\_\_

Our Tree Trimming program follows industry standards and our experts work to find a balance between reliable power and healthy trees. **There is no charge for this service.**

Visit **dteenergy.com/treecare** to learn more about:

- What to expect with tree trimming
- Planting the right tree in the right place
- Safety tips on trees and power

For questions or concerns, please contact your DTE Energy representative as soon as possible:

\_\_\_\_\_





**DTE Energy®**



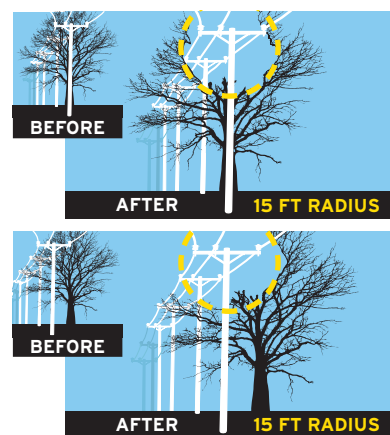
## IMPROVING RELIABILITY

Recently trimmed areas have seen reliability improve by an average of 70 percent.

## WHAT TO EXPECT

### HOW WE TRIM

Crews will trim approximately a 15-foot radius around DTE electrical equipment. This will help to improve reliability, preserve the look of your tree and prevent damage to power lines and other electrical equipment.



### DEBRIS

Small debris, such as leaves and small limbs, will be cleaned and removed. Larger pieces of wood will be cut to firewood length and stacked neatly on the property. If you do not want wood left on your property, please call the number on the front of this door hanger. Debris removal policies differ in the aftermath of a storm.

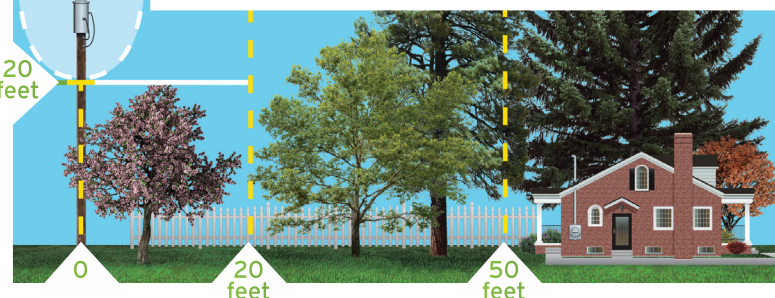
### RIGHT TREE, RIGHT PLACE

50 feet  
45 feet  
30 feet

DTE Energy  
Tree pruning zone  
Varies by pole height



20 feet



The secret to having both beautiful, strong trees and reliable electric service is to plant the right tree in the right place. Consult the planting guide at [dteenergy.com/treecare](https://dteenergy.com/treecare) for more information.

### SAFETY

Trees and power don't always mix well. Stay safe and avoid trimming, working around or climbing trees that have a power line running through or near the tree.

**Learn more at [dteenergy.com/TreeCare](https://dteenergy.com/TreeCare)**

170857-02/2,500/000/8-17